

SPROLINK®

www.sprolink.com



User-friendly Interface and More Flexible Quick Split
Make the Operation Visible



SOFTWARE FOR VF1 PRO

USER MANUAL

VF1 PRO Software User Manual

| | |
|---------------------------|----|
| Overview..... | 2 |
| Preparation..... | 2 |
| Connection..... | 3 |
| Serial Control..... | 3 |
| TCP/IP Control..... | 4 |
| Quick Split..... | 5 |
| Equal Split..... | 5 |
| Unequal Split..... | 6 |
| Operation..... | 8 |
| Layer Operation..... | 8 |
| Signal Switching..... | 9 |
| Transition..... | 10 |
| Save and Load..... | 10 |
| Configuration Script..... | 11 |
| System Info..... | 12 |

Overview

VF1 PRO support software control by USB cable or Lan cable. The complete control function is available from firmware V0.2.7 (System Version).

Details:

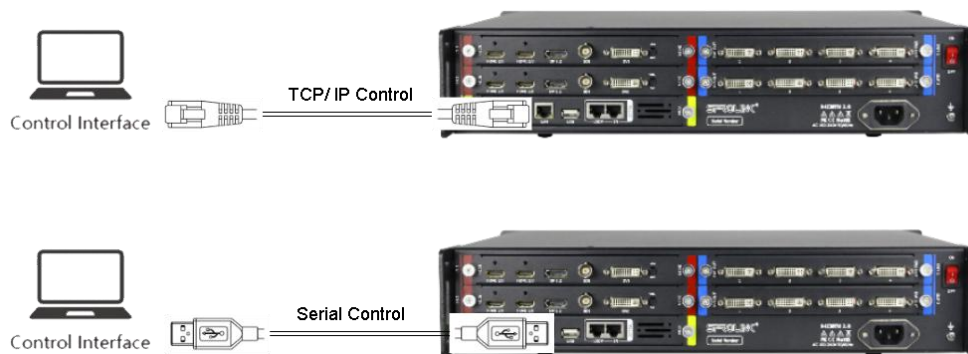
| | |
|--------------|---------------------------------|
| Product Info | VF1 PRO |
| Description | Use Software to control VF1 PRO |
| Version | System Version: V0.2.7 |

Preparation

1. Check the system version on VF1 PRO. The system version should be V0.2.7 and above. If the version is below V0.2.7 please do upgrade for VF1 PRO first.

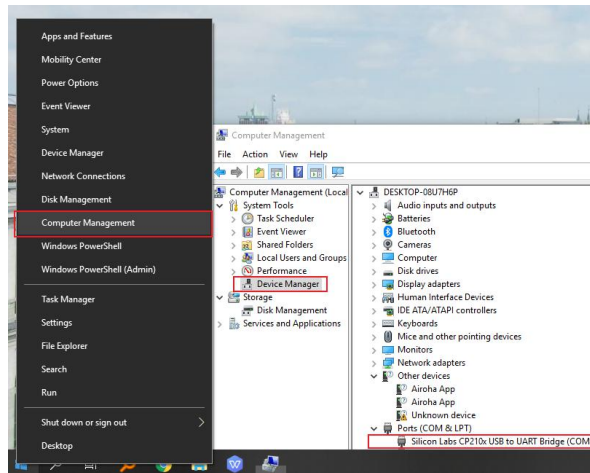
[How to upgrade VF1 PRO?](#)

2. Connect Laptop with VF1 PRO by Ethernet cable for TCP/IP control or USB cable for Serial control.



a. For TCP/IP Control the default IP is 192.168.1.8. Please make sure the PC and device in the same segment.

b. For Serial Control, please check the port number on PC Device Manager. The control port below is COM8.



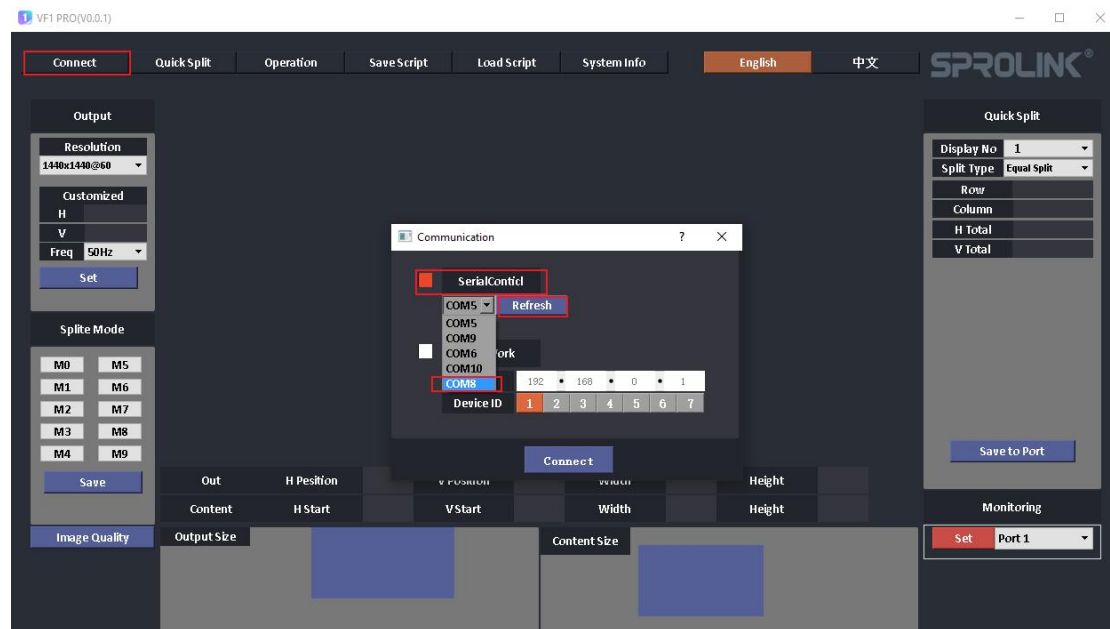
3. Go to the the VF1 PRO Software folder. Turn on the application.



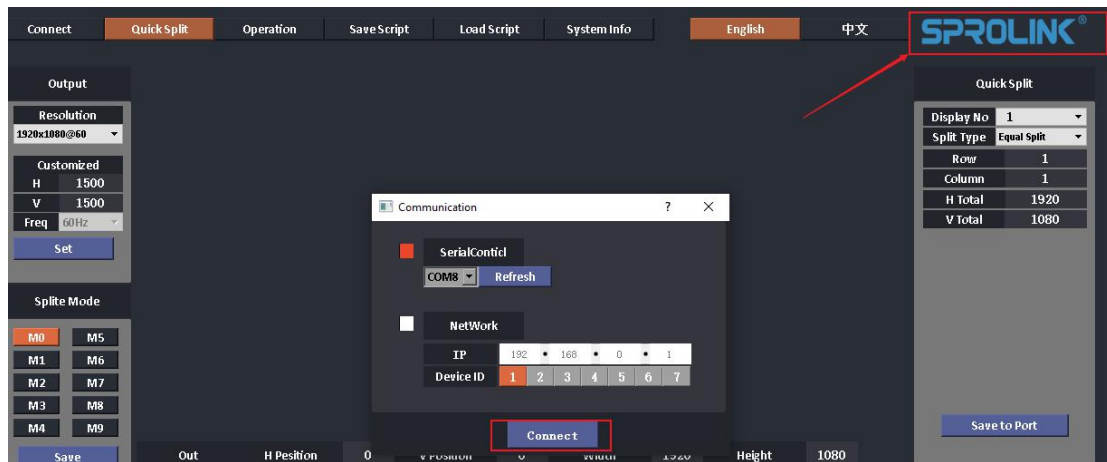
Connection

Serial Control

1. Click Connection on the Software. Enable serial control. Choose the proper com port. If the port number is not on the list please click refresh button to update the port list.

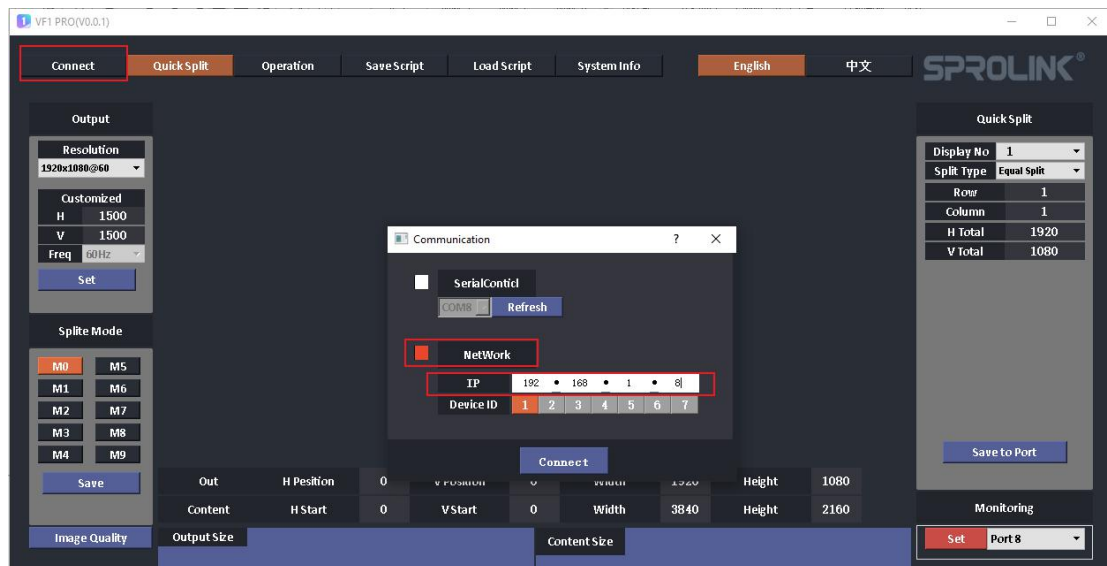


- Click the Connect button on the communication dialog. The software will communicate with VF1 PRO. After connect successfully the SPROLINK logo will be lighted.



TCP/IP Control

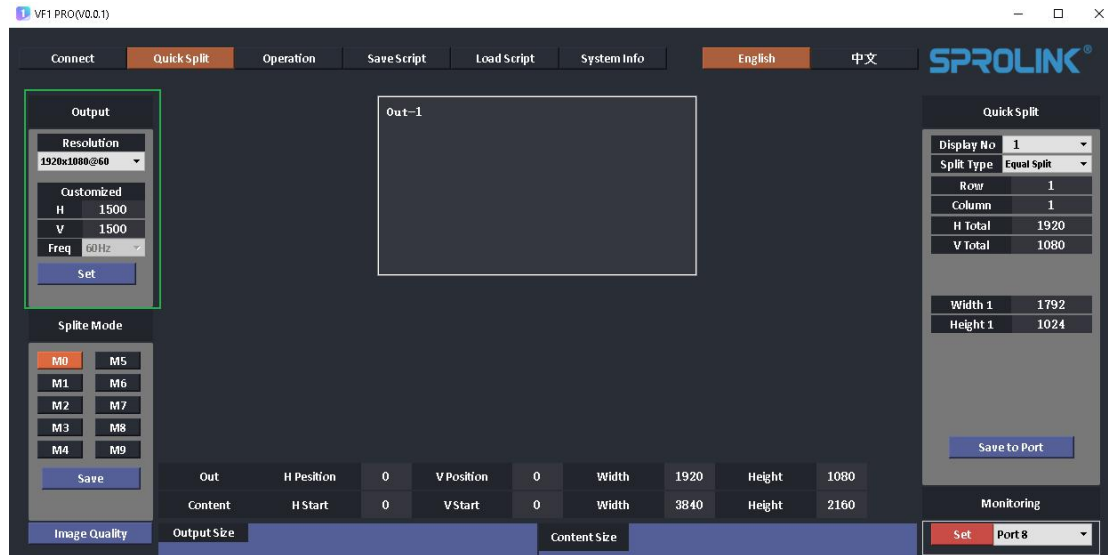
- Make sure you PC and VF1 PRO in the same segment.
- Click Connection on the Software. Choose Network control and set the IP according to VF1 PRO. The default Device ID is 1.



- Click the Connect button on the communication dialog. The software will communicate with VF1 PRO. After connect successfully the SPROLINK logo will be lighted.

Quick Split

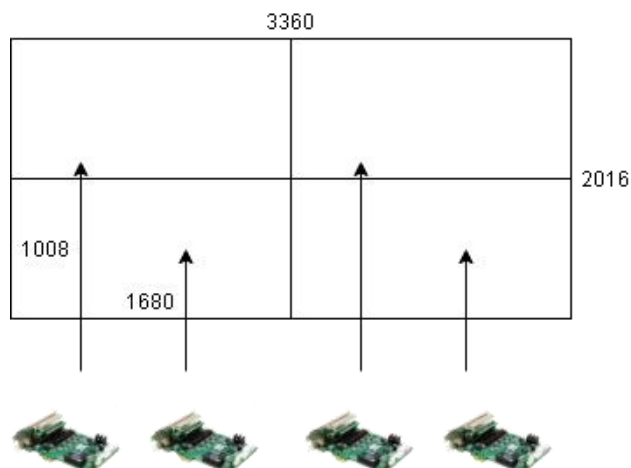
1. Go the the Quick Split page. Set the proper output resolution. The output resolution should not be lower than each sending card resolution in horizontal and vertical. If the required resolution is not on the list, choose customized and set the customized output resolution. The default resolution is 1920x1080@60Hz.



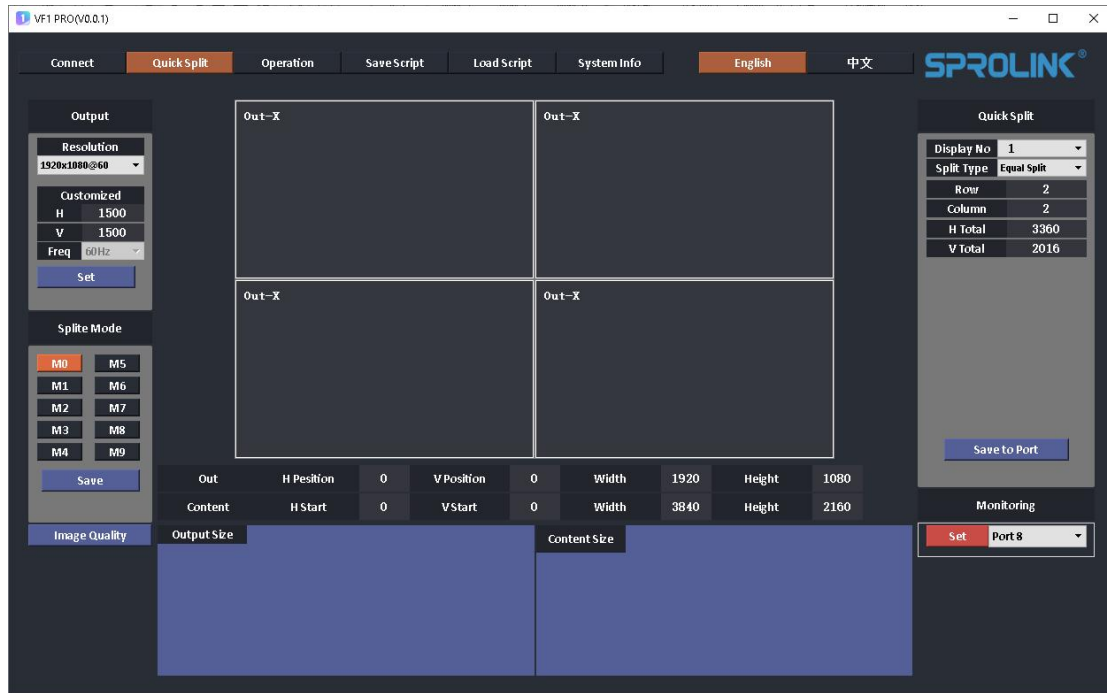
2. Setup the Quick Split parameters. VF1 PRO support equal and unequal split. Set the proper parameters the device will calculate the output port parameters automatically and display the proper image.

Equal Split

Project: Cabinet Resolution 168x168 Cabinet Qty 20 pcs x12 pcs
Equally Split and drive by 4 sending card.



Quick Split Parameters:



Unequal Split

Project: Cabinet Resolution 168x168 Cabinet Qty 19 pcs x11 pcs

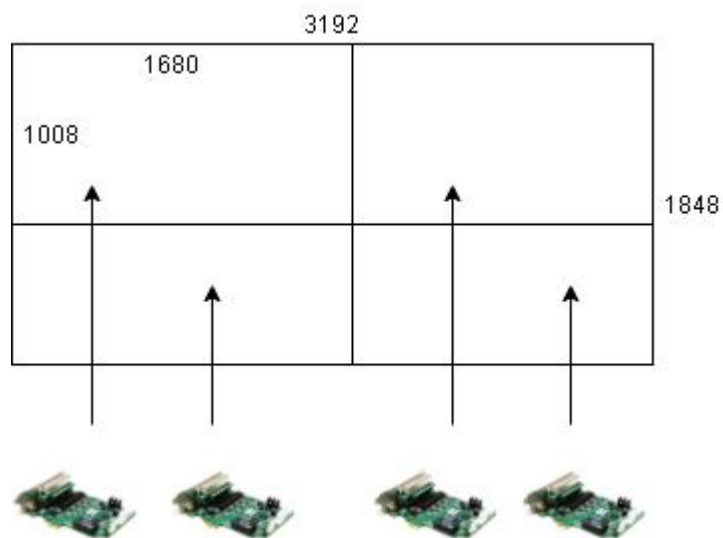
Unequally Split and drive by 4 sending card.

Sending 1: 10x7 Cabinets

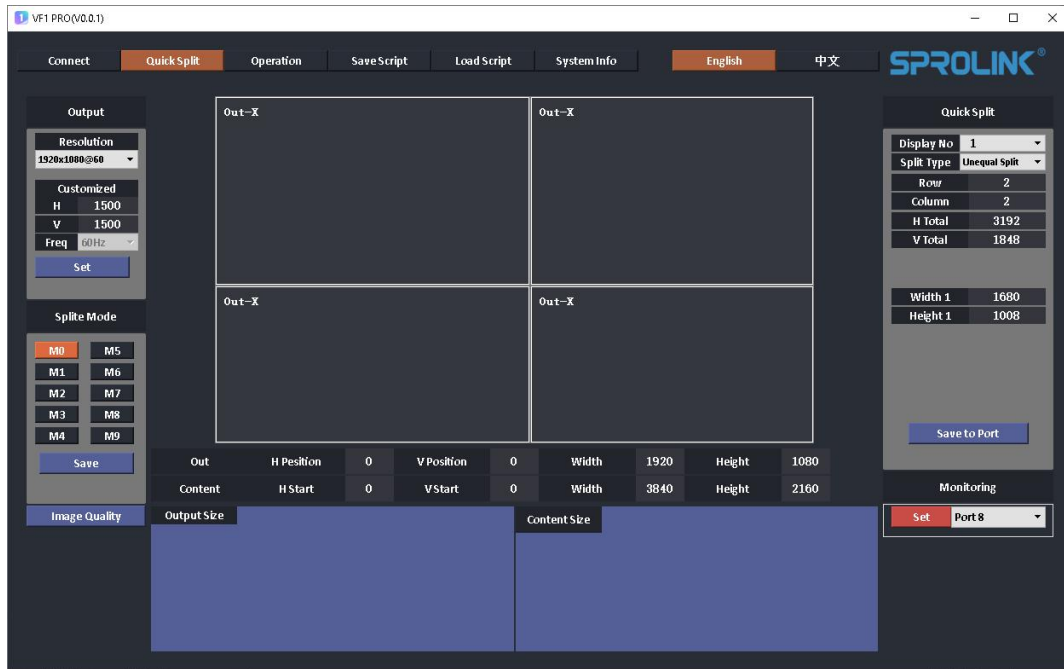
Sending 2: 9x6 Cabinets

Sending 3: 10x5 Cabinets

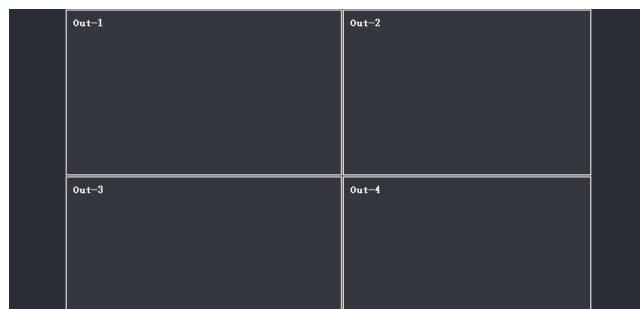
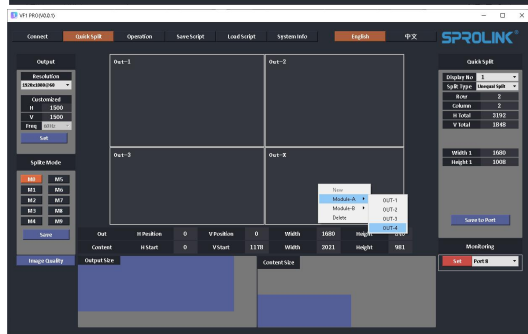
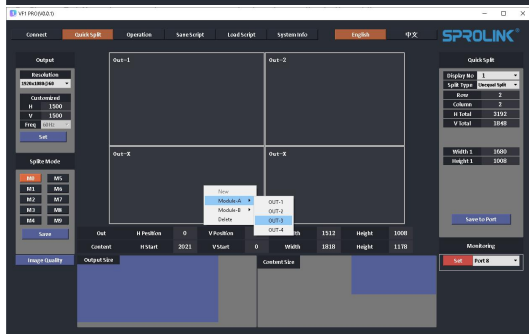
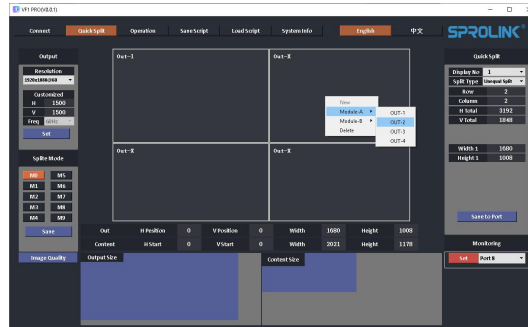
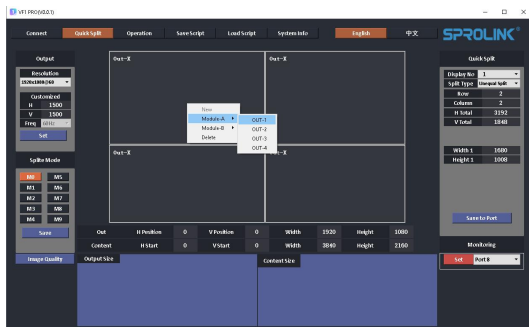
Sending 4: 9x5 Cabinets



Quick Split Parameters:



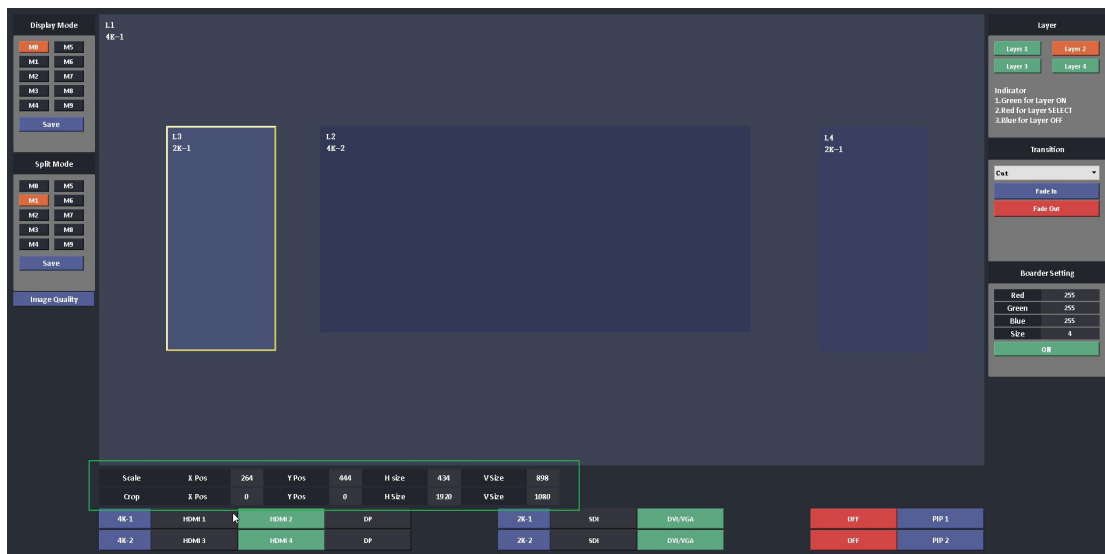
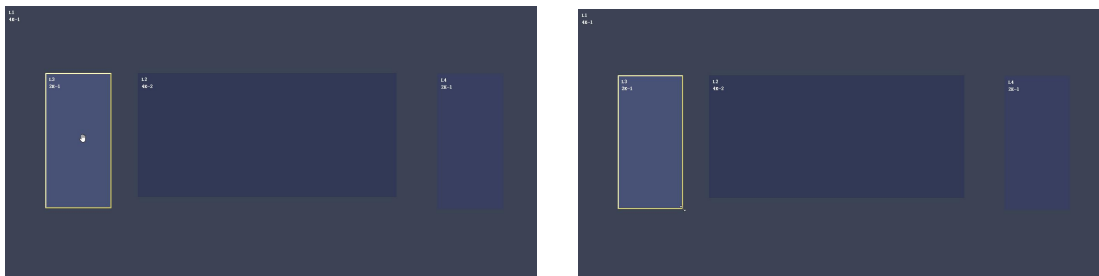
3. Choose Out-X one by one and arrange proper output port according to the cabling.



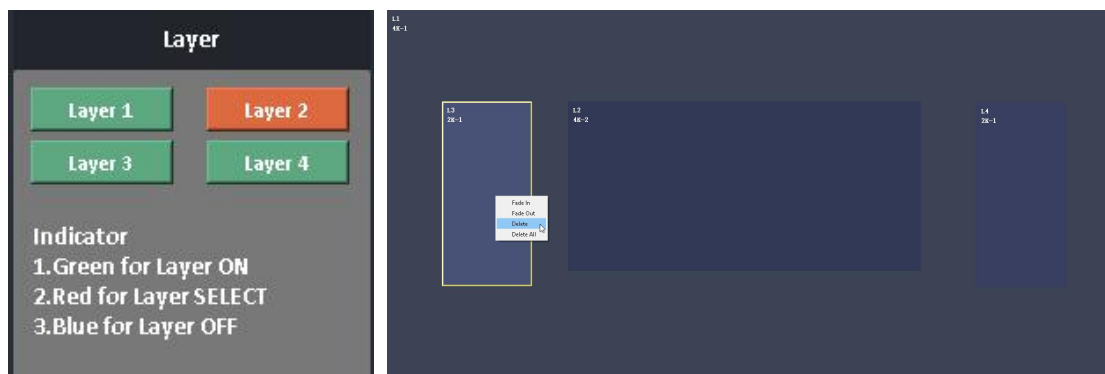
Operation

Layer Operation

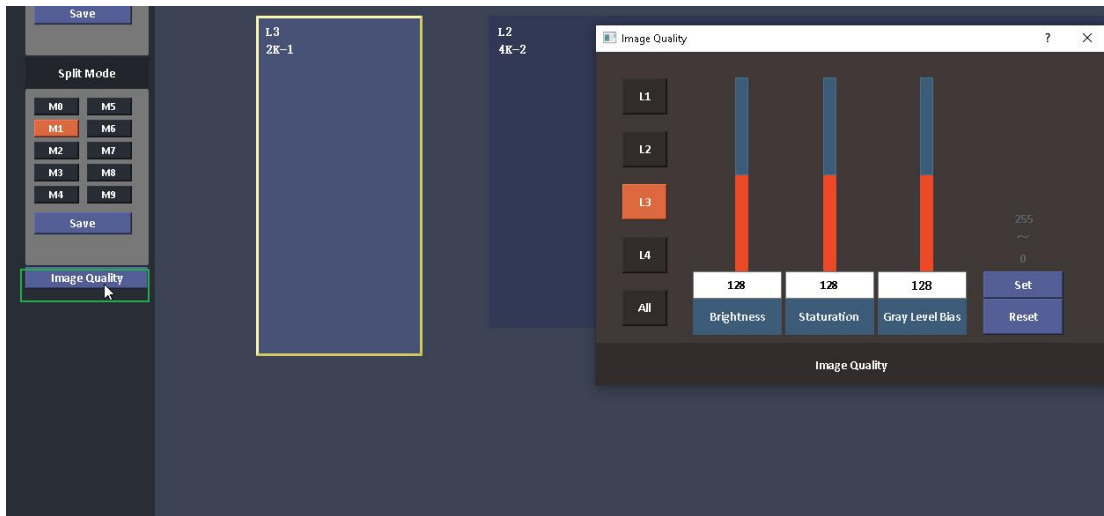
1. Go to Operation page, adjust the layer size and position by keyboard & mouse according to the project. You can also edit the specific parameters on the Scale & Crop Tab.



2. Open or Clear layer by the layer button. You can also turn off the layer on right click menu. Please follow the indicator to do layer operation.



3. Click Image Quality Tab. Adjust the parameters accordingly. You can set the parameters for the layer one by one or click All and apply the image quality settings to all layers.

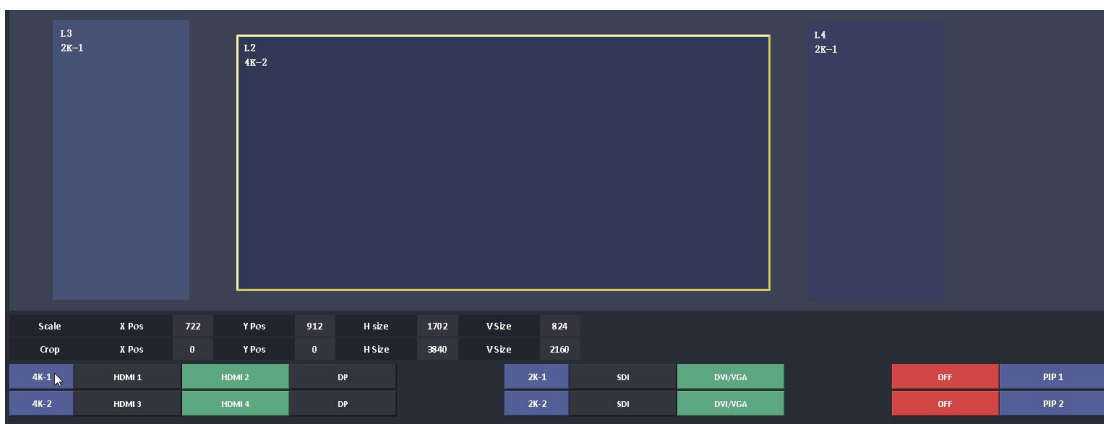


4. Choose the specific layer and adjust the boarder parameters. You can set the color and degree of the boarder or simply turn on or turn off the board for the chosen layer.



Signal Switching

1. VF1 PRO support input board switching. L1 / L2 can switch between 4K-1 and 4K-2. L3 / L4 support signal switching between 2K-1 and 2K-2. Choose the specific layer and switch the input accordingly.



2. VF1 PRO support input channel switching on each input board. Click the input button for switching.

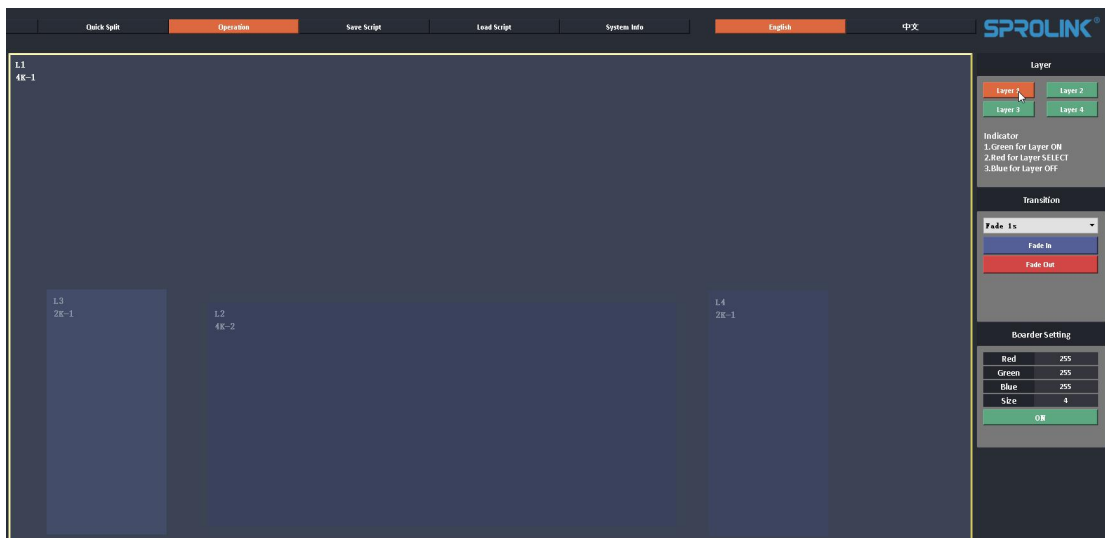


Transition

1. VF1 PRO support fade in & fade out transition on each layer. Enable fade in or fade out button. And set the transition parameters.

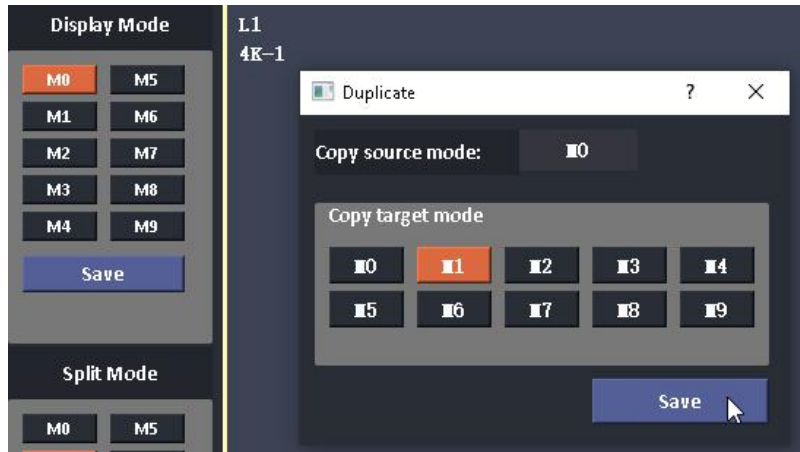


2. Choose the specific layer to trigger fade in or fade out transition.



Save and Load

1. VF1 PRO will save the layer configuration automatically on the current display mode.
2. Click Save to paste the current layer configuration on other display mode. It will paste the layer configuration of the source mode to the target mode. Choose the specific target mode and click save to confirm. The layer configuration of target mode will be covered by the source mode.



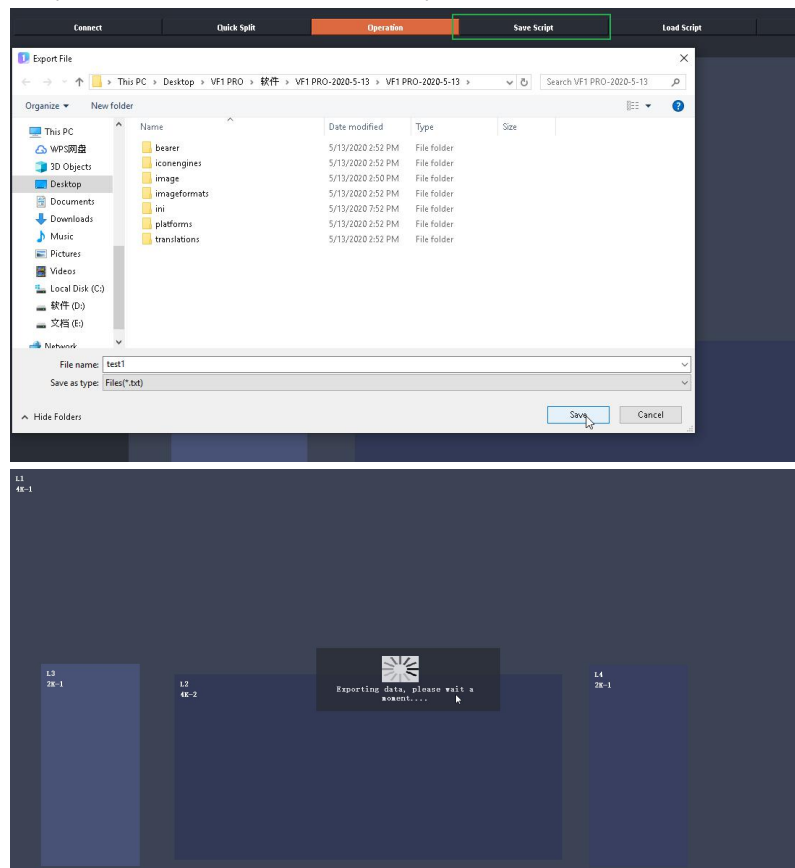
3. Click different display mode to load the different layer configuration.

Configuration Script

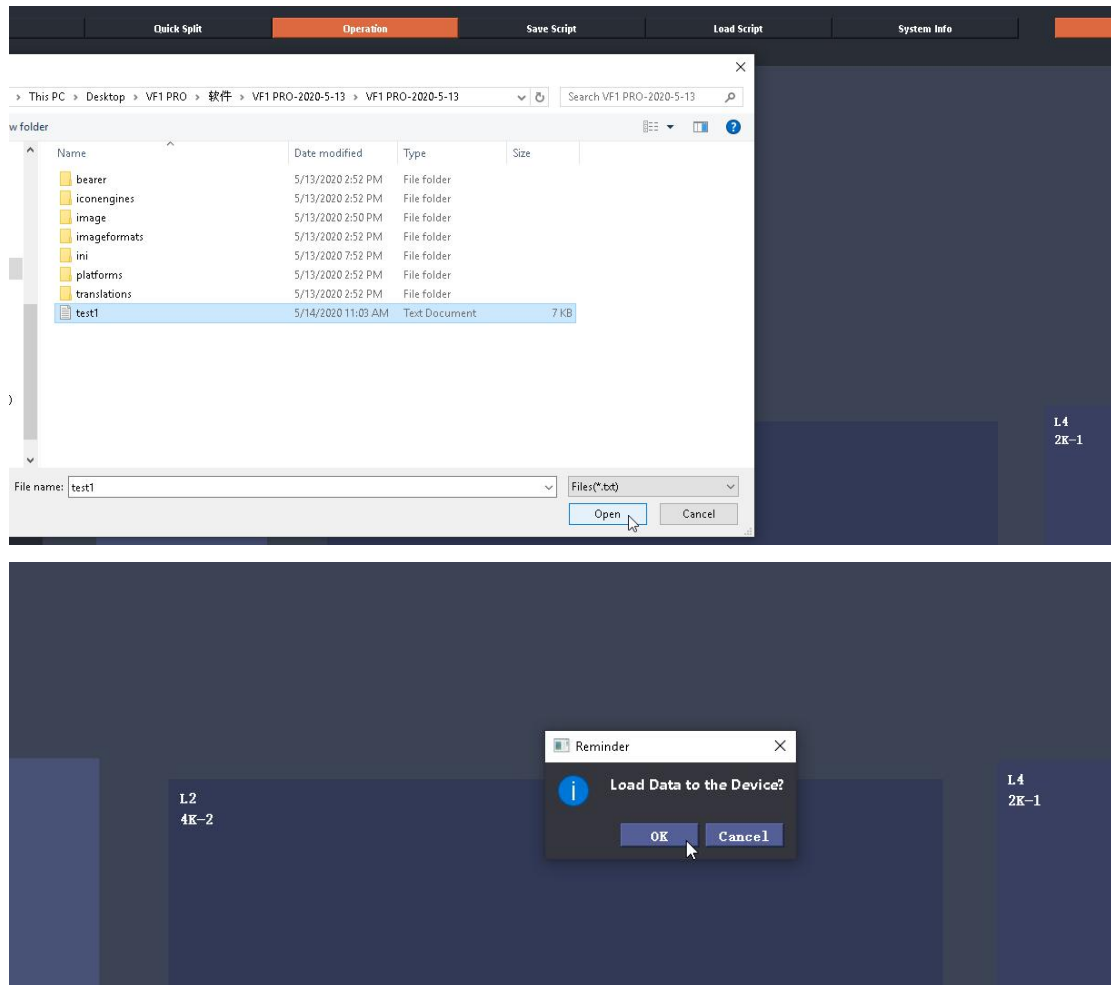
After finish the configuration, it is better to save the settings to laptop for backup. VF1 PRO will create a document to save all the configuration. Next time if the configuration is ruined you can directly load the file to recall the settings.

It can also be used for technical support. The technician can create the script according to the project then customers on site can directly load the script and finish the configuration.

1. Click Save Script and edit the name for the Script. Then click save.



2. Click Load Script. Choose the specific script for project. Click Open and load the script.



System Info

1. Click the system info to get the device firmware. This is helpful when troubleshooting. You can also click Factory Reset when need clear the configuration.

