



# GoShare

Wireless Content Sharing System

# T1

**SPROLINK**<sup>®</sup>

[www.sprolink.com](http://www.sprolink.com)

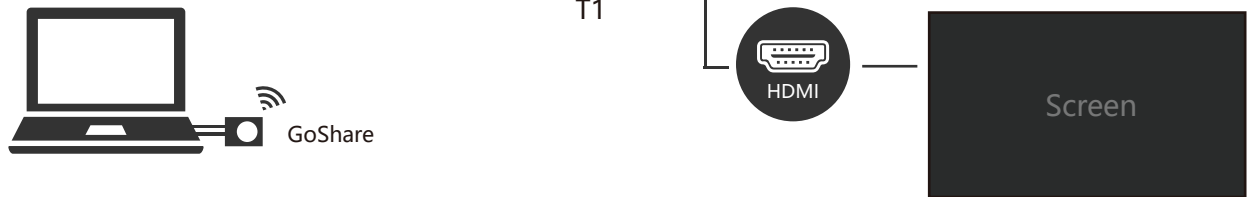
# Introduction

GoShare is the most simple way to connect or participate in a meeting. It allows the users to share content wireless. GoShare based on Linux system, compared with traditional Android system, it is with more stability and safety. With default 5GHz transmission, realize less delay signal transfer. Support Windows, Mac, Android OS, IOS platform and Universal HDMI Source wireless transmission. No cables, no set-up, no waiting to join in. Perfect for meeting room.

## Wireless Content Sharing by APP

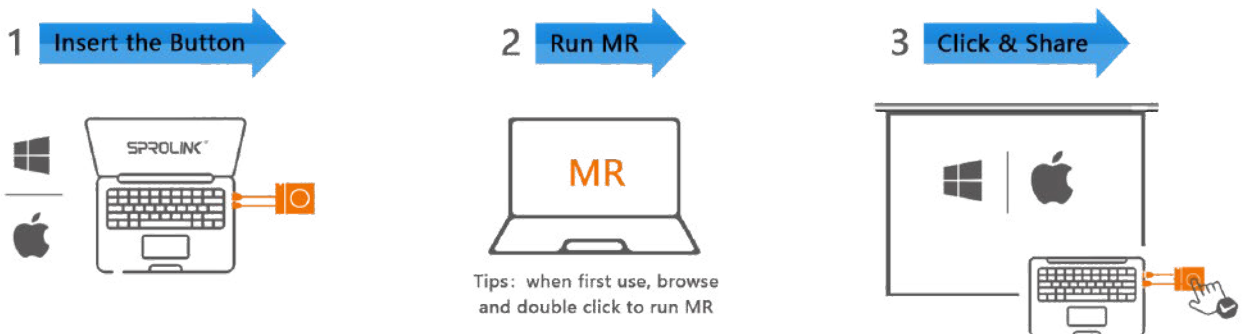


## Wireless Content Sharing by GoShare

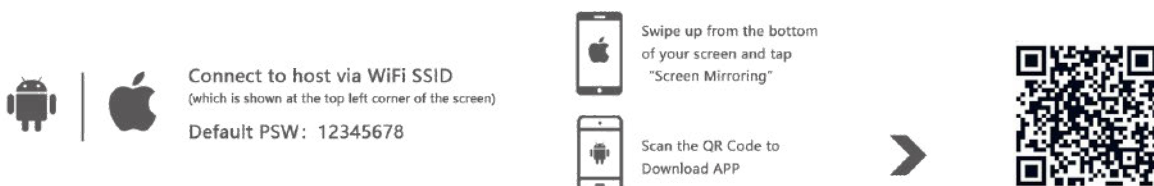


# System Connection

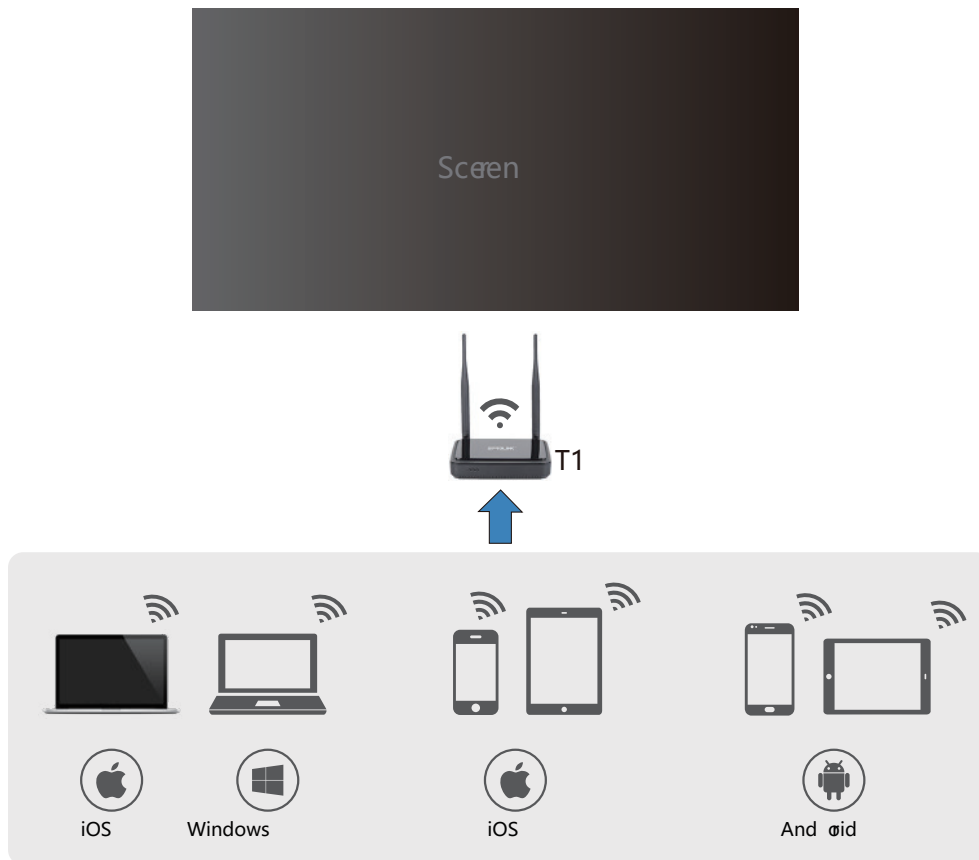
## PC Users



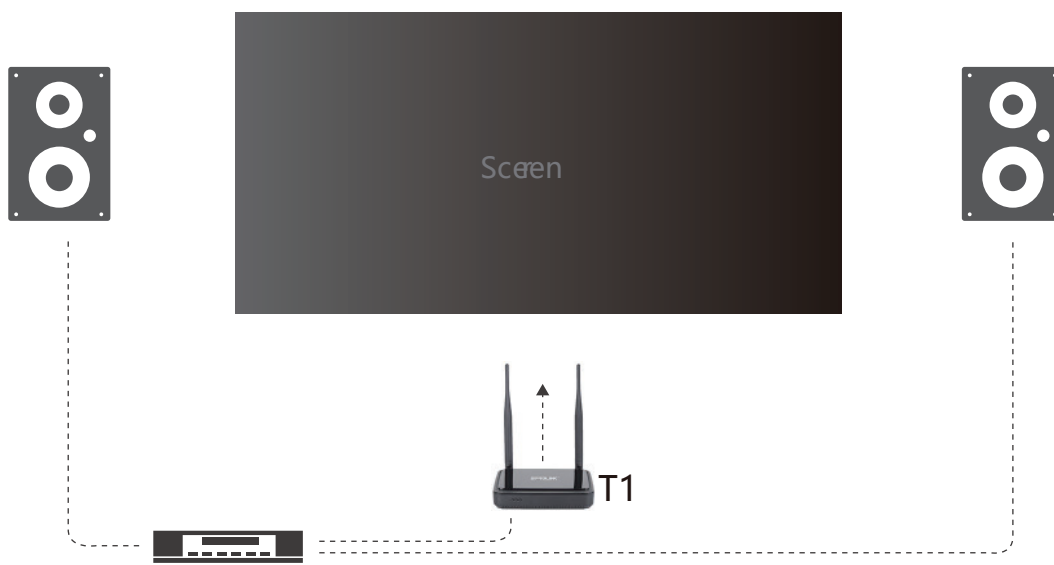
## Pad / Phone Users



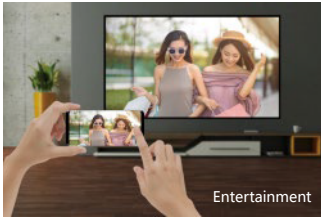
## Application 1: Wireless Presentation



## Application 2: AV Sync Switching



# Application



## Specifications

|  |  |
|--|--|
| Operating System                         | Windows 7/8.1/10 32bit and 64bitMAC OS X 10.10/10.11/10.12 and upSmart Phone wireless mirrorSupport IOS airplay, iOS9/iOS10/iOS11, OS X 10.10/10.11/10.12 and aboveAndroid 5.0 and above |
| OutputAudio                              | 1xHDMI, 1xAudio analog line out on mini jack socket (3.5mm), 44.1KHz /16bit  |
| Other Port                               | 1x RJ45, 2xUSB   |
| Output Resolution                        | 1920x1200@60Hz   |
| Number of Sources Simultaneous on Screen | 1  |
| Number of Simultaneous Connections       | 16   |
| Wireless Transmission Protocol           | IEEE 802.11ac/802.11n  |
| Wireless Transmission Speed              | Up to 867Mbps  |
| Wireless Transmission Distance           | max. 30m (100 ft) between Goshare and Base Unit  |
| Frequency band                           | 2.4 GHz and5 GHz (Default)   |
| Anti-theft protocol                      | WPA2-PSK   |
| Transimission delay                      | Less than 100mS  |
| Reverse Control                          | Support mouse reverse control, and 16 point touch reserve control  |
| Power Supply                             | GoShare Base Unit: 12V/1A, Power Consumption 5W<br>GoShare Button: 5V/500mA, Power Consumption1.5W   |
| Power Consumption                        | 40W  |
| Temperature                              | Operating: -5°C to +40°C   |
| Humidity                                 | Storage: 0 to 90% relative humidity, non-condensing<br>Operation: 0 to 85% relative humidity, non-condensing   |
| Weight                                   | 1kg (Device)   |
| Dimension                                | 190mm x 120mm x 30mm (Device)  |

